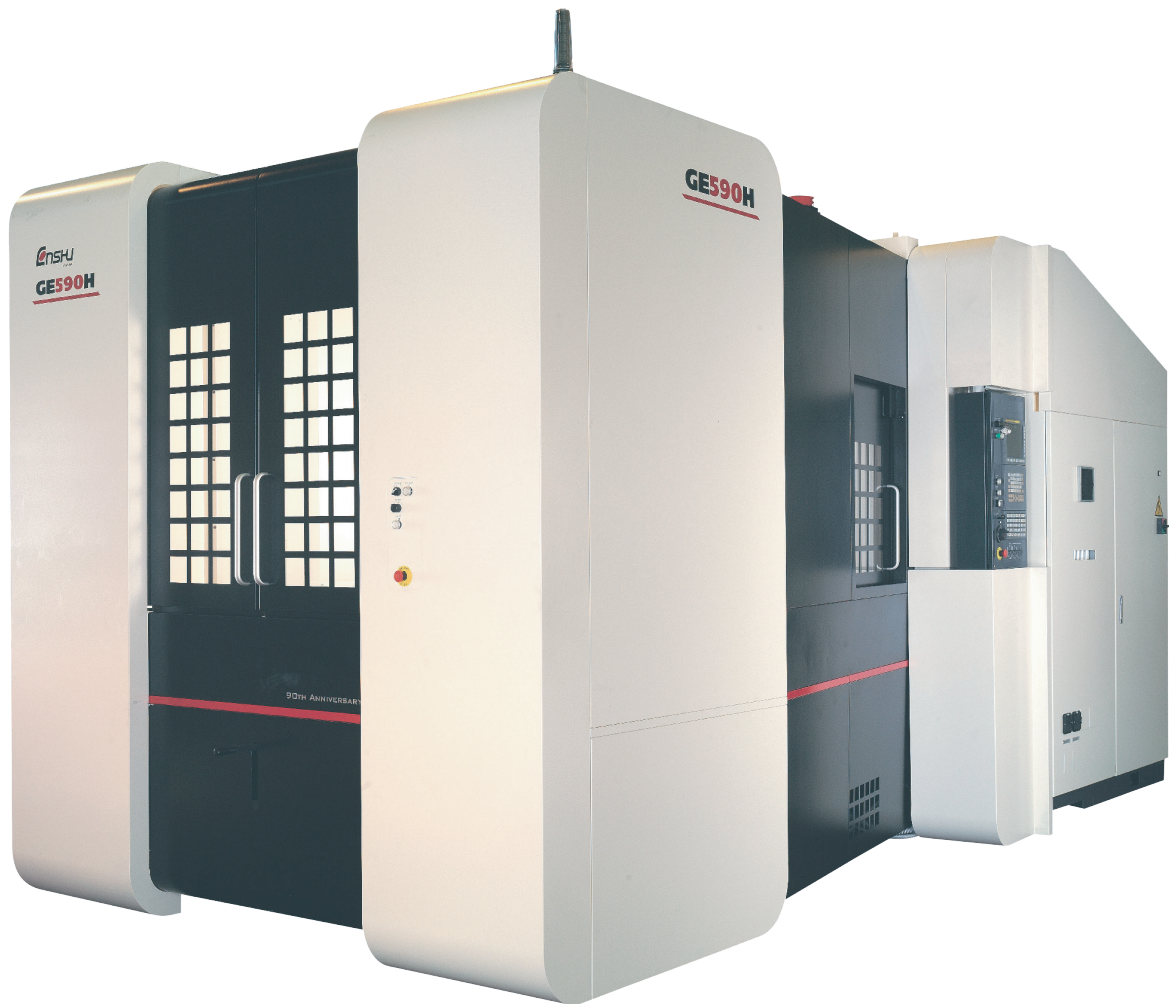


GE590H

TAPER
50

PALLET
630

Enshu
JAPAN

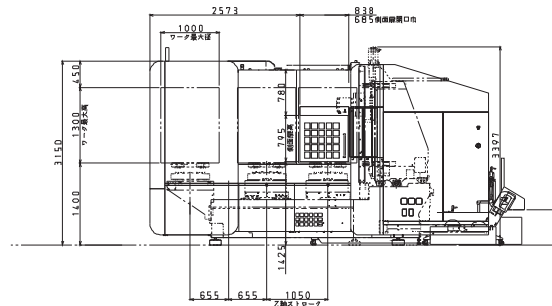
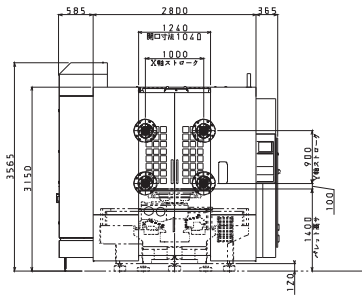


**OUT-PERFORM
OUT-PRODUCE
OUT-LAST**

Advancing the technology of ultra-high performance for stand-alone production, lean lines or agile machining systems.

- A heavy duty 54HP 50-taper spindle with 525Nm of torque
- Designed for high volume metal removal in steel and aluminum
- Cross roller linear guideways on XYZ axis for added rigidity
- Refrigerated & temperature controlled spindle and ballscrews
- 39.3"Ø x 51" high workload capacity weighing up to 2,645lbs
- Large capacity center trough for chip disposal

GE590H MACHINE SPECIFICATIONS



AXIS TRAVEL

X Axis	39.4"
Y Axis	35.4"
Z Axis	41.3"
Table top to spindle centerline	3.94 - 39.4"
Table centerline to spindle face	5.9 - 47.2"

FEEDRATES

Rapid traverse (X/Y/Z)	1,968 IPM
Cutting feedrate	0 ~ 590 IPM
Acceleration/Deceleration (X/Y/Z)	0.42G
Feed motors, AC Servo	7.4 HP

SPINDLE

Spindle taper	CAT50
Spindle bearing diameter	4.3"
Spindle power/type	40.2HP/Integral
Full power developed at	
Low Range	500 RPM
High Range	2,500 RPM
Spindle ramp-up time	3.8 sec.
Rigid tapping (max. rpm)	3,000 RPM
Lubrication type	Oil-air

ACCURACY

Positioning, full stroke (X/Y/Z)	0.000080"
Repeatability	+/- 0.000040"

AUTOMATIC TOOL CHANGER

Magazine capacity	40 (78, 130)
Maximum tool diameter	4.7"
with adjacent pockets empty	11.8"
Maximum tool length	23.6"
Maximum tool weight	
Full speed	35 lbs.
Reduced Speed (programmable)	55 lbs.
Tool change time (tool-tool)	2.0 seconds
Tool change time (chip-chip)	3.1 seconds

AUTOMATIC PALLET CHANGER

Pallet size	24.8 x 24.8"
Capacity per pallet/total	2,650 lbs
Minimum index	Full 4th axis (360,000 positions)
Pallet index time (90° index)	2.5 seconds
Pallet change time	15 seconds*

MACHINE ELECTRICS

AC 200/208V ± 10%, 3 Phase, 60Hz	59 KVA
----------------------------------	--------

MACHINE DIMENSIONS & WEIGHTS

L x W x H (length includes chip conveyor)	297 x 137 x 140"
Weight	51,700 lbs.

STANDARD EQUIPMENT

- Fanuc 31iMB control
- Fanuc 54 HP spindle drive
- Fanuc axis servo drives
- CAT50 spindle taper
- 630 mm pallets (24.8 x 24.8")
- Rotary automatic pallet changer
- 40-tool automatic tool changer
- 10,000 RPM integral spindle
- Ceramic spindle bearings
- Full 4th axis (360,000 positions)
- High volume rolling filter chip conveyor
- Spindle air curtain
- Spindle oil chiller
- Coolant thru-spindle (256 PSI)
- Spindle flood coolant
- Bed flush coolant
- Ceiling shower coolant
- Refrigerated & temperature controlled ballscrews
- Spindle speed override
- Feedrate/rapid traverse override
- LED work light
- Three-stage stack light
- Totally enclosed splash guard with manual operated doors
- Door interlock
- Inch/metric switchable capability
- 2MB total program memory
- Automatic Corner override
- Tool offset memory type C
- 200 tool offsets
- Custom macro "B"
- Additional macro variables
- Additional registrable programs
- High speed skip

OPTIONS AVAILABLE

- HSK 63A spindle taper
- 6,000 RPM spindle
- Additional capacity tool magazine
- FMS pallet system
- 800mm size pallet
- Part probe
- Broken tool detector
- Program memory expansion to 8MB
- Additional tool offsets to 999
- Tool life management
- Additional work coordinates to 300 sets
- Enshu die mold package
- Dataserver and fast ethernet



Enshu (USA) Corporation
404 E. State Parkway
Schauamburg, IL 60173

Tel: (847) 839-8105
Fax: (847) 839-8226

www.enshuusa.com
info@enshuusa.com

ver. J-5 500